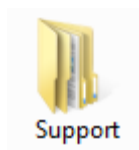


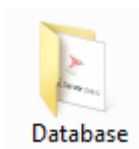
# ChromaZona

## SQL Engine Installation - Quick Guide

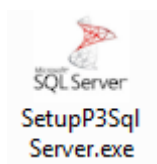
### 1 Install SQL Server



➔ Open the Support folder



➔ Open the Database folder



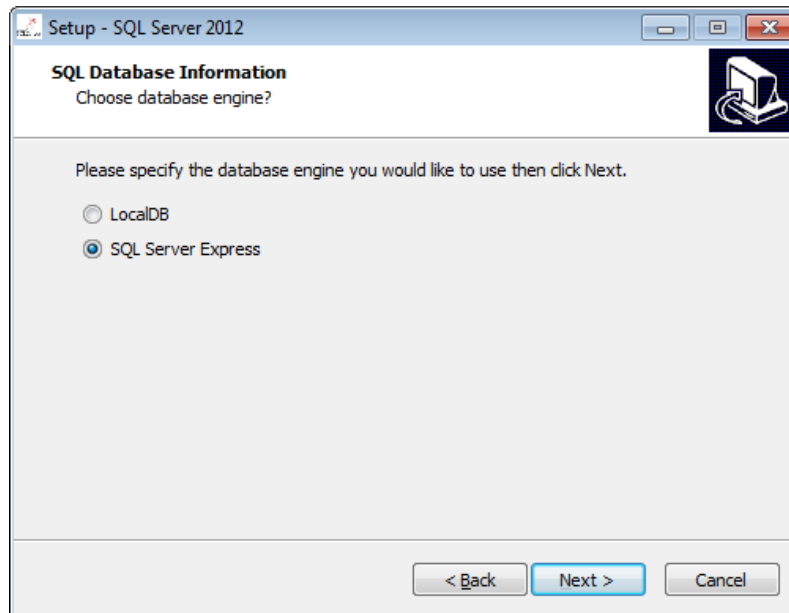
➔ Run SetupP3SqlServer.exe

### 2



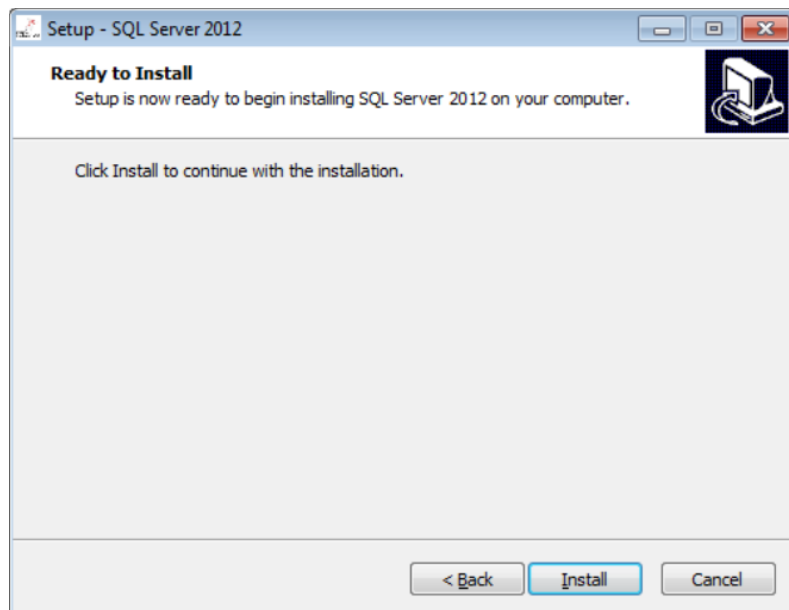
Start screen for installation of SQL Server Express and/ or SQL LocalDB Express.  
Press Next to continue

3



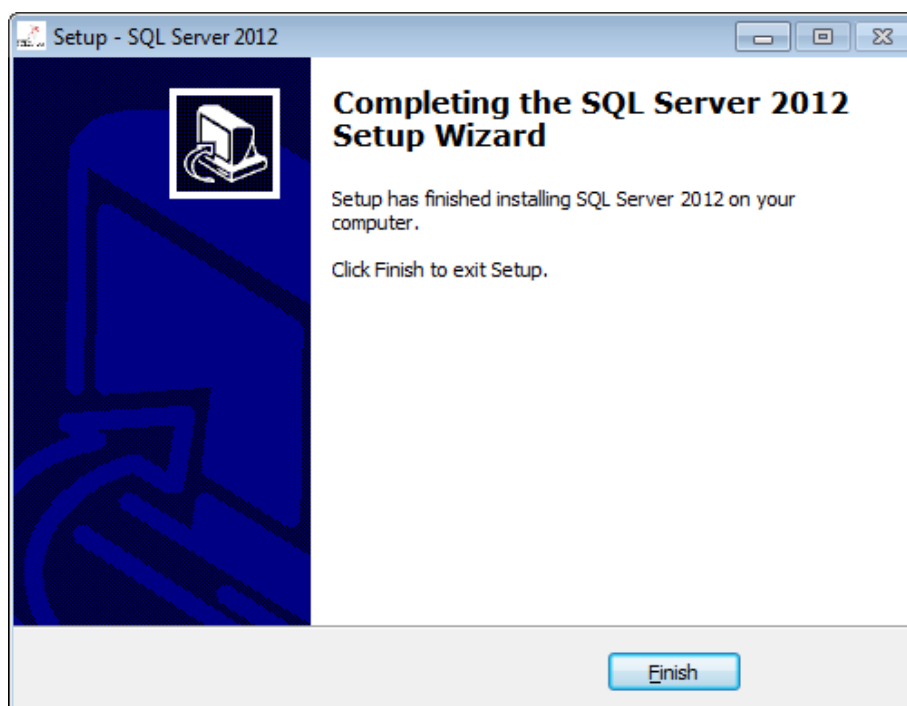
Select the database engine you wish to use. LocalDB is a lightweight version of the full SQL Server Express but is not suitable when sharing a database between multiple Network/Windows accounts. See Appendix for details. Press Next to Continue

4



Press Install to complete the installation

5



The installation will take a number of minutes (typically around 20). During this time a number of screens will appear and when complete the screen above will be displayed. Press Finish to end the installation

**CONTACT SYNBIOSIS:**

EUROPE:

Tel: +44 (0)1223 727125

Email: [support@synbiosis.com](mailto:support@synbiosis.com)

USA:

Tel: 800 686 4451/301 662 2863

Email: [support@synbiosis.com](mailto:support@synbiosis.com)

[www.synbiosis.com](http://www.synbiosis.com)

CZSQLEI0716